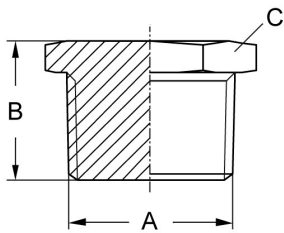


Threaded fittings DIN EN 10241

Art.No EUR Art.No EUR

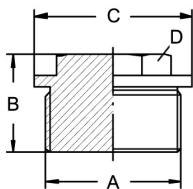
Plug hexagonal, R



DN	A	B	C					AISI316C-1.4408
6	R 1/8"	17	SW 12					542028 6,60
8	R 1/4"	17,5	SW 16					542029 6,90
10	R 3/8"	18	SW 20					542030 7,30
15	R 1/2"	25	SW 24					542031 8,50
20	R 3/4"	26	SW 30					542032 11,10
25	R 1"	29	SW 38					542033 18,80
32	R 1,25"	35	SW 46					542034 25,60
40	R 1,5"	38	SW 52					542035 38,30
50	R 2"	39	SW 65					542036 41,90
65	R 2,5"	44	SW 81					542037 106,60
80	R 3"	54	SW 94					542038 160,40
100	R 4"	55	SW 119					542039 344,80

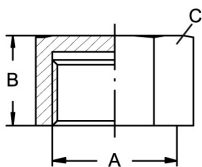
Similar to DIN EN 10241

Screw plug, G



DN	A	B	C	D				AISI316Ti
6	G 1/8"	17	14	SW 10				544028 11,40
8	G 1/4"	21	18	SW 13				544029 11,90
10	G 3/8"	21	22	SW 17				544030 14,80
15	G 1/2"	26	26	SW 19				544031 17,60
20	G 3/4"	30	32	SW 24				544032 19,50
25	G 1"	32	39	SW 27				544033 30,70
32	G 1,25"	33	49	SW 30				544034 61,60
40	G 1,5"	33	55	SW 30				544035 73,10
50	G 2"	40	72	SW 36				544036 100,30
65	G 2,5"	50	75	SW 46				544037 123,80
80	G 3"	55	95	SW 50				544038 150,60

Cap hexagonal, Rp



DN	A	B	C					AISI316C-1.4408
6	Rp 1/8"	13	SW 15					542128 6,10
8	Rp 1/4"	17	SW 18					542129 6,40
10	Rp 3/8"	19	SW 21					542130 6,70
15	Rp 1/2"	20	SW 27					542131 8,30
20	Rp 3/4"	24	SW 30					542132 11,80
25	Rp 1"	25	SW 38					542133 17,40
32	Rp 1,25"	28	SW 50					542134 25,70
40	Rp 1,5"	28	SW 55					542135 33,40
50	Rp 2"	34	SW 70					542136 51,30
65	Rp 2,5"	40	SW 92					542137 91,50
80	Rp 3"	45	SW 109					542138 122,30
100	Rp 4"	50	SW 132					542139 206,20

Similar to DIN EN 10241